

Ev'ry Time I Feel the Spirit

Ev - 'ry

3 1

G G#° D/A B⁷ E Em⁷ A⁷

time I feel the Spi - rit Mov - in' in my heart, I will

4

D D_{ma}⁷ D⁷ G G#° D/A B⁷ Em⁹ A⁷

pray, Ev - 'ry time I feel the Spi - rit Mov - in' in my heart, I will

By An' By

rubato

Piano introduction in E-flat major, 4/4 time. The music is marked *rubato* and *p* (piano). It features a melodic line in the right hand and a bass line in the left hand, both in a slow, expressive tempo.

Oh By an' by, By an' by,

First vocal entry and piano accompaniment. The vocal line starts with a triplet of eighth notes: "Oh By an' by, By an' by,". The piano accompaniment provides harmonic support with chords and a steady bass line.

E \flat /B \flat B $^{\circ}$ C 7 F 7 B 7 E \flat B 7 /F E \flat E \flat 7 /G

Second vocal entry and piano accompaniment. The vocal line continues with "I'm gon- na lay down dis hea- vy load, Oh By an' by,". The piano accompaniment continues with harmonic support.

A \flat A $^{\circ}$ E \flat /B \flat B $^{\circ}$ C 7 F B 7 E \flat

Final vocal entry and piano accompaniment. The vocal line concludes with "By an' by, I'm gon- na lay down dis hea- vy load, Oh". The piano accompaniment provides a final harmonic resolution.

Deep River

mf

The piano introduction consists of two staves. The right hand plays a series of chords and single notes in a descending pattern, while the left hand plays a steady eighth-note accompaniment.

D D^{#5} G/D D B_m

p Deep _____ riv- er, my home is o - ver

The first vocal line is written on a treble clef staff. It begins with a half note 'D' (Deep) followed by a half note 'riv- er,'. The melody continues with 'my home is o - ver' over the next two measures. The piano accompaniment is shown below, with a dynamic marking of *p* and fingerings 4 and 5 indicated.

F^{#m} G_{ma}7 A7 D D^{#5} G/D G_m

Jor- dan _____ Deep _____ riv- er, Lord, I

The second vocal line is written on a treble clef staff. It begins with a half note 'Jor- dan' followed by a half note 'Deep'. The melody continues with 'riv- er, Lord, I' over the next two measures. The piano accompaniment is shown below, with a dynamic marking of *p* and fingerings 4 and 5 indicated.

Hush! Somebody's Calling My Name

Piano introduction in 4/4 time, marked *f*. The right hand features a triplet of eighth notes in the first measure, followed by a series of chords and eighth notes. The left hand plays a steady eighth-note bass line.

F B♭ C7/9

Vocal line for the first measure, marked *f*. The note is a whole note G4.

Hush!

Piano accompaniment for the second measure, marked *mf*. It features a triplet of eighth notes in the right hand and a bass line with a triplet of eighth notes in the left hand.

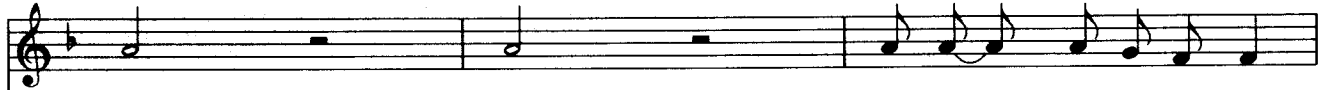
F B♭ C7/9 F B♭ C7/9 F B♭ C7/9

Vocal line for the third measure, marked *mf*. The notes are eighth notes: G4, A4, B4, C5, B4, A4, G4.

Hush! some-bo - dy's cal-ling my name;

Piano accompaniment for the fourth measure, marked *mf*. It features a triplet of eighth notes in the right hand and a bass line with a triplet of eighth notes in the left hand.

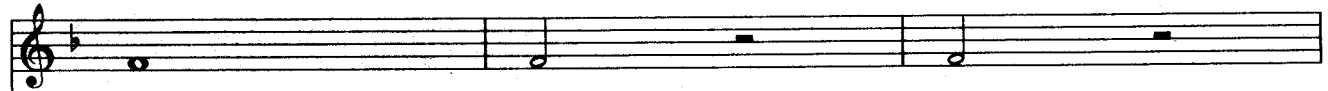
F B♭ C7/9 F B♭ C7/9 F B♭ C7/9



Hush! Hush! some-bo - dy's cal-ling my



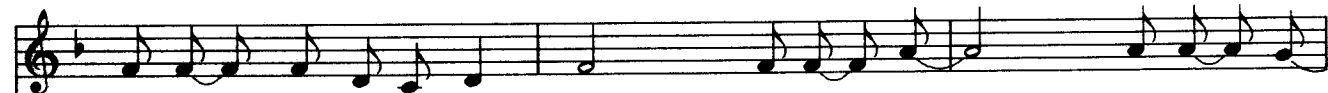
B♭7 C¹¹ F B♭ C7/9 F B♭ C7/9



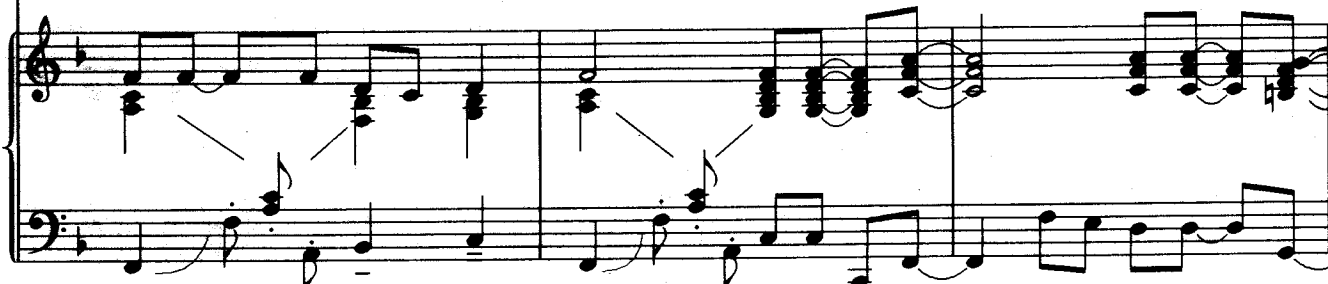
name; Hush! Hush!



F B♭ C7/9 F C¹¹ F Dm7 G7



some-bo - dy's cal-ling my name; O my Lord, o my Lord,



3 3

When the Saints Go Marchin' In

slow gospel waltz

The piano introduction is in 6/8 time with a key signature of one sharp (F#). It begins with a treble clef and a bass clef. The treble staff starts with a triplet of eighth notes (F#, A, C) followed by a quarter note (D), then a half note (F#). The bass staff starts with a quarter note (F#), a quarter note (A), and a half note (C). The piece is marked *mf* and ends with a *f* dynamic marking. Fingerings are indicated: 4, 2, 1 in the treble and 2 in the bass for the first measure; 3, 2, 1 in the treble and 2, 1 in the bass for the second measure; 5 in the treble and 2, 1 in the bass for the third measure; and 3, 2, 1 in the treble and 4, 3 in the bass for the fourth measure.

A¹¹ D/A A^{7/9} D D/A D A¹¹ D/A A^{7/9} D D/A

1. Oh when the Saints _____ go mar- chin' in, _____

The piano accompaniment for the first phrase is in 6/8 time, marked *mf*. It features a steady bass line and chords in the treble staff.

D A¹¹ D/A A^{7/9} D B⁷ E⁷ D/F# E⁷/G# A¹¹

_____ oh when the Saints go mar - chin' in, _____

The piano accompaniment for the second phrase continues in 6/8 time, marked *mf*. It concludes with a final chord and a fermata over the last note.

Sometimes I Feel Like a Motherless Child

Slowly with expression

mp *legato*

with pedal

Em Emmaj⁷ Em⁷ A⁷ F#^o B⁷

1. Some-times I feel like a mo- ther- less child, Some-times I feel like a
 2. Some-times I feel like I'm al - mos' gone, Some-times I feel like I'm

p *simile*

Em A⁷ Em Emmaj⁷ Em⁷ Am⁷

mo- ther- less child, Some-times I feel like a mo- ther- less child, a
 al - most gone, Some-times I feel like I'm al - mos' gone; way

Good News

Lively and bright

Piano introduction in G major, 4/4 time. The right hand features a melody of eighth notes with a forte (*f*) dynamic. The left hand provides a bass line with a triplet of eighth notes in the first measure. The tempo/style is 'Lively and bright'.

§ D⁷ G

D⁷ G

Vocal line for the first phrase: 'Good news! Char - i - ot's com - ing. Good news! Char - i - ot's com - ing. Good'. The melody is in G major, 4/4 time, with a '7' (seventh) fingering indicated above the notes.

Good news! _____ Char - i - ot's com - ing. Good news! _____ Char - i - ot's com - ing. Good

§

Piano accompaniment for the first phrase, corresponding to the vocal line. It features a steady eighth-note bass line and a right hand with chords and moving lines. A '7' fingering is shown above the right hand.

D⁷ E_m E_b⁷ G/D D⁷ G *Fine.* D⁷^{#5}

Vocal line for the second phrase: 'news! Char - i - ot's com - ing, and I don't want to leave me be - hind. _____'. The melody continues in G major, 4/4 time.

news! _____ Char - i - ot's com - ing, and I don't want to leave me be - hind. _____

Fine.

Piano accompaniment for the second phrase, concluding with a 'Fine.' marking. It includes a triplet of eighth notes in the right hand and a bass line. The piece ends with a final chord in G major.